

Energy Transition Process in One of Indonesia Super Priority Tourism Destination and Special Economic Zone in Likupang at North Minahasa Regency



Joune J.E. Ganda

Regent of North Minahasa,
North Sulawesi Province, Indonesia

Energy Transition Process in One of Indonesia Super Priority Tourism Destination and Special Economic Zone in Likupang at North Minahasa Regency



5 Super Priority Tourism Destinations in Indonesia

1. Lake Toba, North Sumatra.
2. Borobudur Temple, Central Java.
3. Mandalika, West Nusa Tenggara.
4. Labuan Bajo, East Nusa Tenggara.
5. and, Likupang, North Sulawesi.

*Likupang, North Minahasa Regency, North Sulawesi Province, Indonesia

Energy Transition Process in One of Indonesia Super Priority Tourism Destination and Special Economic Zone in Likupang at North Minahasa Regency



Super Priority Tourism Destinations in Indonesia

Likupang, North Sulawesi

There are 4 beautiful destinations in Likupang.

First, Lihaga Island.

Second, Pulisan Beach.

Third, Pulisan Hill.

Fourth, Gangga Island.



Energy Transition Process in One of Indonesia Super Priority Tourism Destination and Special Economic Zone in Likupang at North Minahasa Regency



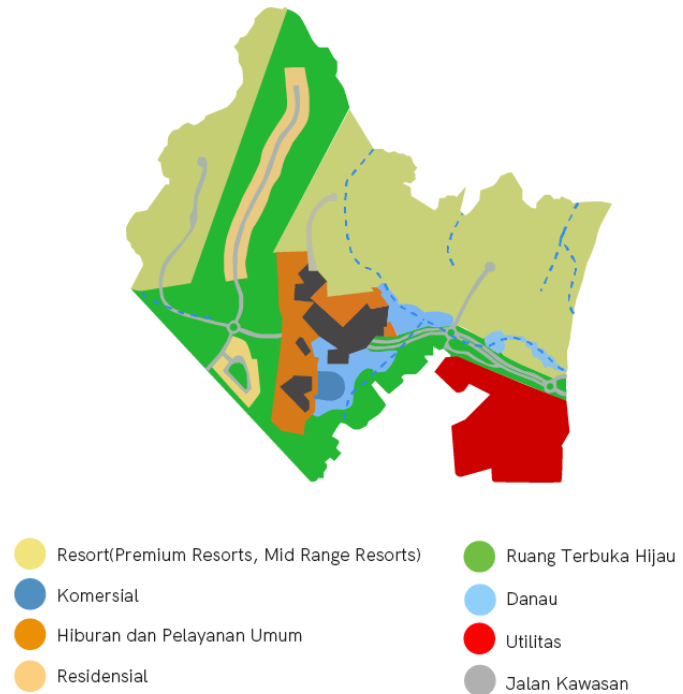
Likupang is also categorized as Special Economic Zone (SEZ)

LOKASI

Kabupaten Minahasa Utara, Provinsi Sulawesi Utara



MASTERPLAN



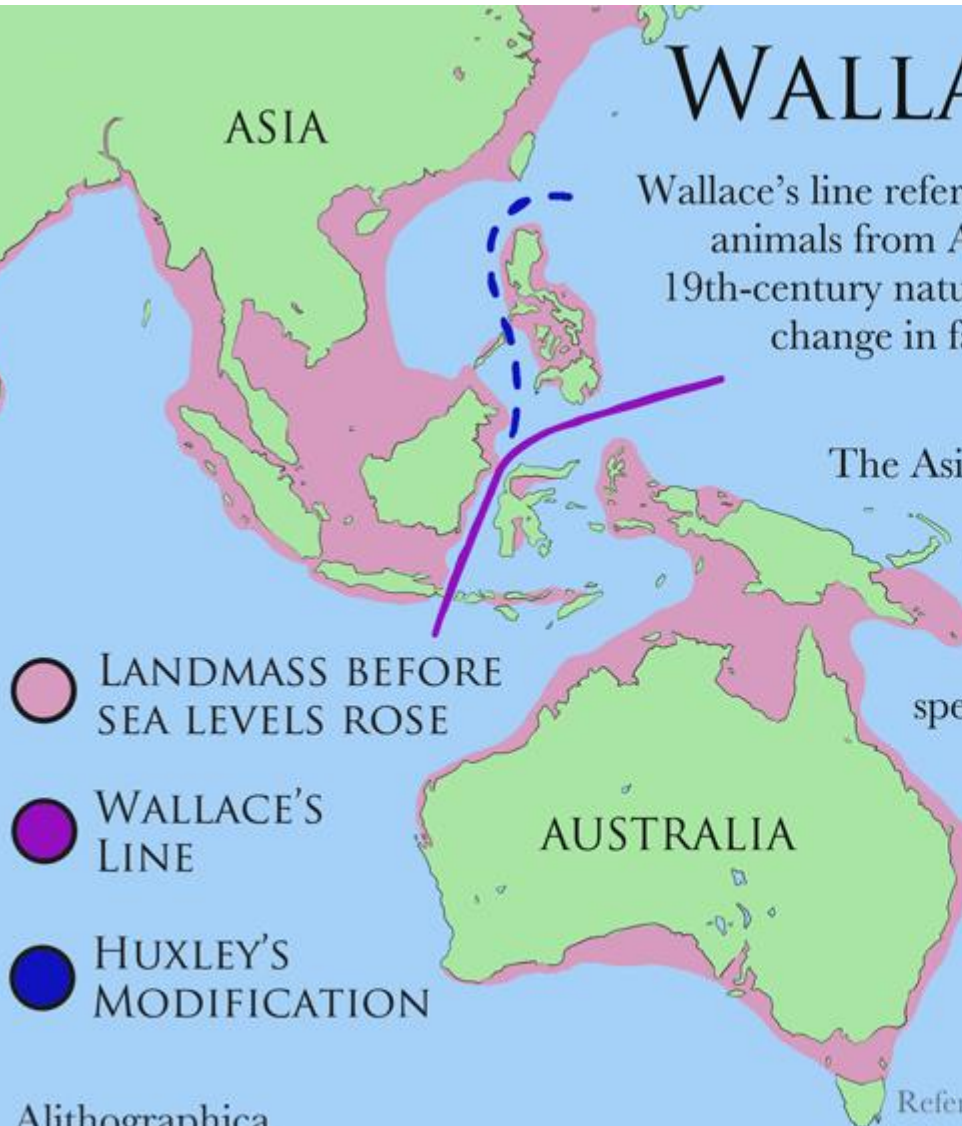
Energy Transition Process in One of Indonesia Super Priority Tourism Destination and Special Economic Zone in Likupang at North Minahasa Regency



WALLACE'S LINE

Wallace's line refers to a biogeographic boundary that separates Asian animals from Australian ones. The boundary was named after the 19th-century naturalist Alfred Russel Wallace, who noticed a sudden change in fauna after crossing a 35 km (~20 mi) strait between the Indonesian islands of Bali and Lombok.

The Asian and Australian landmasses used to extend much farther than they do today. Around 13,000 years ago - towards the end of the last Ice Age - rising sea levels from melted glaciers turned areas of both into a string of islands. However, the native species on these islands are dictated by the landmasses they were originally connected to. Islands west of Wallace's line have animals of Asian origin. The first true island off the coast of the Asian mainland was Lombok; islands east of Lombok have species of Australian origin.



Energy Transition Process in One of Indonesia Super Priority Tourism Destination and Special Economic Zone in Likupang at North Minahasa Regency



Solar Power Plant in Likupang, North Sulawesi. Capacity of 21 Mega Watt peak (MWp)

Energy Transition Process in One of Indonesia Super Priority Tourism Destination and Special Economic Zone in Likupang at North Minahasa Regency



Energy Transition Process

1. Utilize God's gift of natural wealth in the form of renewable energy as much as possible.
2. Energy saving campaigns and policies towards energy transformation.
3. Utilizing technology for utility control and automation without harming nature and the environment.
4. Improving the ability of waste utilities around the SEZ area and associated with the final product of renewable energy from waste.

Energy Transition Process in One of Indonesia Super Priority Tourism Destination and Special Economic Zone in Likupang at North Minahasa Regency



Thank you...